

U·notion



VIEW MORE

Ningbo Youming Electrical Co., Ltd

Address: No. 933 Lingxu Er Road, Cidong Binhai District,
Cixi, Zhejiang, China

Tel: 0086-574-63982196/63982198

Website: <https://nbyouming.en.alibaba.com/>
<https://www.nbyouming.com/>

PRODUCT CATALOG



CONTENTS

About us.....	1
Company Profile.....	2
How To Design Your Own Model.....	3
Hair Care Products.....	5
Circulation Fan Products.....	27
Heaters.....	31
Air Purifier.....	35

About us

Ningbo Youming Electrical Appliance Co., Ltd. locates in Ningbo, Zhejiang with more than 70000 square meter coverage area, we are national High-tech enterprise. Since 2010, we developed more than 100 home appliances including heater, air purifier, air circulator, humidifier and personal care products by our own design and development team, we are professional manufacturer for healthy home appliance products.

Our main production line aims to improve the living environment and life quality, promote energy saving products to customers. We keep innovation and increasing development investment, we also build experienced R&D team and our own professional lab, we own proprietary intellectual property rights for all our core technology.

we have 23 years experience for both mainland and international markets, we follow ISO9001 quality management system strictly, there are advanced injection molding machines and punching forming machine, SMT circuit board production line and other professional manufacturing equipment, our products exported to North and South America, Europe and Asia market and district which got high reputation in different markets.

Company Profile



Production

Production Lines: 2
Output Value: over US\$100 Million



R&D Capability

Number of R&D Staff: over 50



OEM Capability

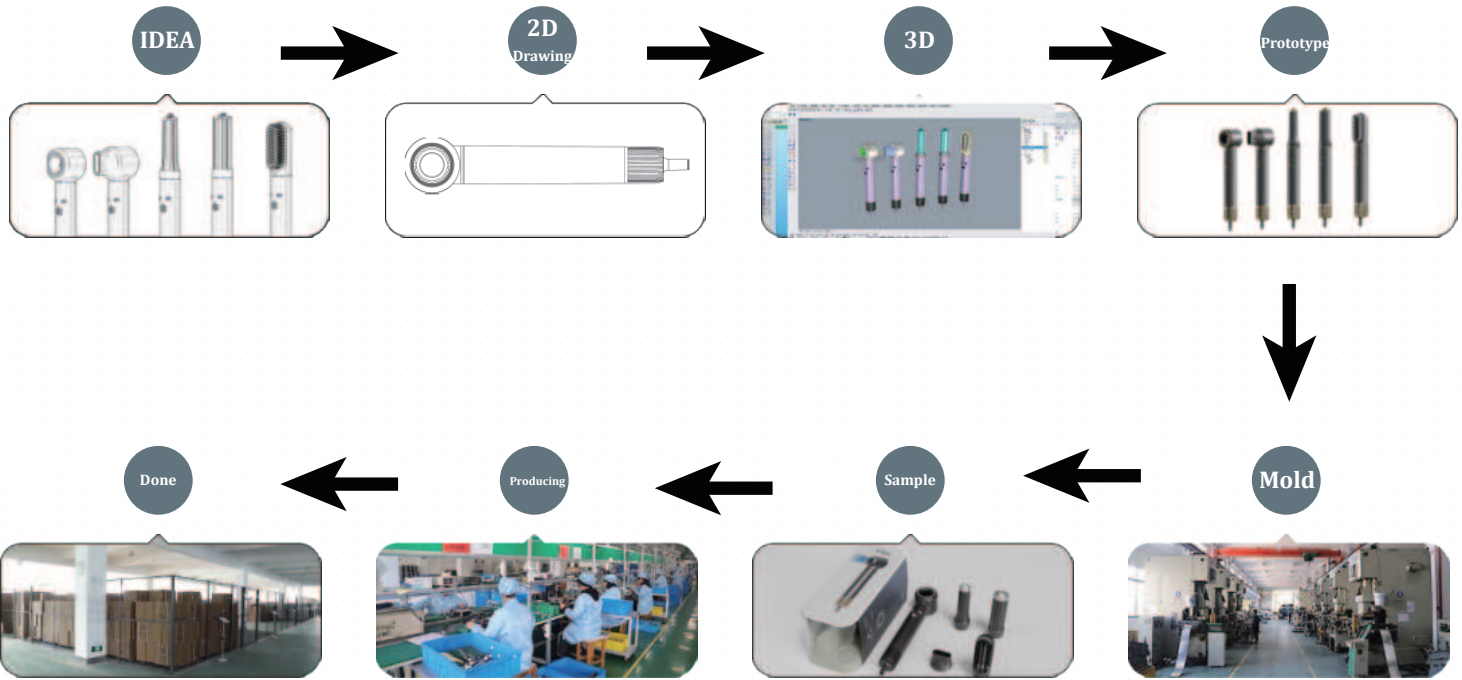
OEM Experience: over 20 Years



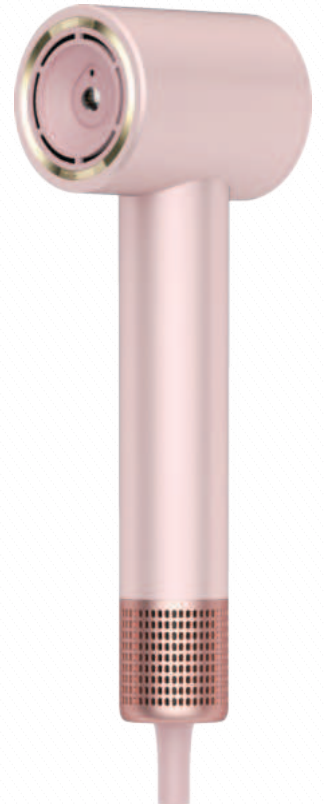
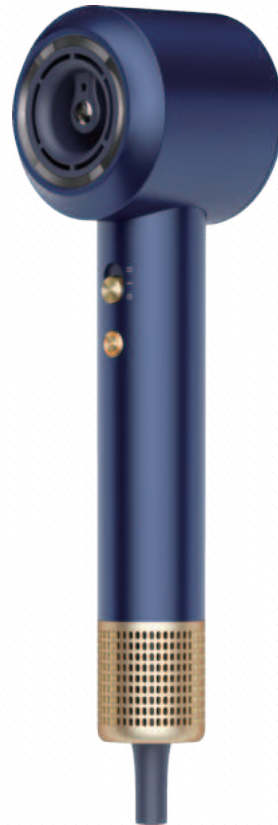
Quality Control

ISO9000 Certification
QC Staff: over 60 people

How To Design Your Own Mold



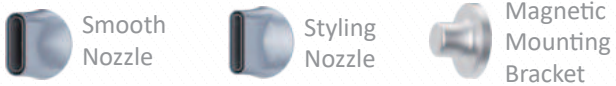
Hair Care Products



KH-801



Optional Accessories:



The difference of Model D,E,F is the head part appearance

Specification:



600 million
Negative Ions
Output



110000 RPM
High Speed
Motor



Wind Speed
60m/sec



Customize Your
Color and Logo



3 different design



8 kinds of
drying mode

Product Data

Model No.:KH-801D/E/F

Power :1400W

Product Weight :384g
[without power cord]

Product Dimension:

72*80*303mm

Net Weight:

407g

Power cord :

1.7m(include plug)

Power Supply: 220-240V~, 50-60Hz(EU) 120V~, 60Hz(US)

Temperature Setting: Cold/ Warm / Hot

Wind Speed Setting: Low / High

Mode: Cold / Warm / Hot / Cold&Hot Circulation /Scalp Protection



360°rotating magnetic

Meet your different needs

Drying / Smoothing / Curling / Massage





Quick Drying Nozzle

Blow away the water on the hair surface quickly and softly, dryer the hair with gentle wind like natural hair drying



Styling Nozzle

360 degree rotated
Magnetic attachment,
controls the wind direction
to collect hair for long hair
drying



30mm/40mm Barrel

Create and set natural curls
or waves in longer hair



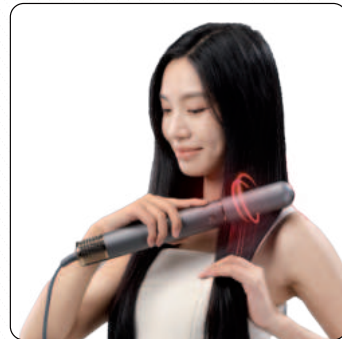
Firm Smoothing Brush

Creates a smooth straight
hair style quickly



Hair Brush

Remove the hair static and
reduce the hair frizzing



Infrared Hair Growth Comb

Protect the scalp, infrared
rays helps to stimulate your
scalp to grow more hair



Recommended combination

We can provide products in different colors and different styles

KIT 1



KIT 2



KIT3



KIT4



Specification:



600 million
Negative Ions
Output



110000 RPM
High Speed
Motor



11 in 1



Customize Your
Color and Logo



Straight Hair



Curl Hair

Product Data

Model No.:KH-802

Power : 1300W

Product Weight :384g
[without power cord]

Mainbody Dimension:
100*145*265mm

Net Weight:
465g

Power cord :
1.7m(include plug)

Power Supply: 220-240V~, 50-60Hz(EU) 120V~, 60Hz(US)

Temperature Setting: Cold/ Warm / Hot

Wind Speed Setting: Low / High

Mode: Cold / Warm / Hot / Cold&Hot Circulation

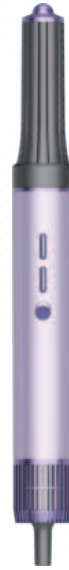
KH-802A
STYLE 1



KH-802A
STYLE2



KH-802B
STYLE 1



KH-802B
STYLE2



												PRICE
KIT 1												
KIT 2												
KIT 3												

KH-803



Optional Accessories:



Smooth
Nozzle



Styling
Nozzle



Magnetic
Mounting
Bracket



360° Rotating Magnetic

Artificial Intelligence (AI) Hair Dryer
Automatic Temperature Control Technology
Help to protect scalp health

Quick&Intelligent drying without overheat damage



TOF Sensor

LED Lighting System

Switch/Fan Speed

- Off
- Low Speed
- == High Speed

Temperature Level

Short Press

- Blue Light - Low
- Yellow Light - Sublow
- Orange Light - Mid
- Red Light - High
- AI Scalp Protection Mode

Removal Magnetic Inlet



Scalp Protection Mode



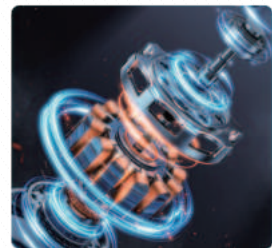
LED Lighting Indicator



600 million Negative ions



120000 RPM High Speed Motor



Specification:



600 million
Negative Ions
Output



110000 RPM
High Speed
Motor



Wind Speed
60m/sec



Customize Your
Color and Logo



3 different design



8 kinds of
drying mode

Product Data

Model No.:KH-803B

Power:1400W

Product Weight :384g
[without power cord]

Product Dimension:
72*80*303mm

Net Weight:
407g

Power cord :
1.7m(include plug)

Power Supply: 220-240V~, 50-60Hz(EU) 120V~, 60Hz(US)

Temperature Setting: Cold/ Warm / Hot

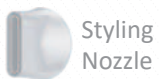
Wind Speed Setting: Low / High

Mode: Cold / Warm / Hot / Cold&Hot Circulation/Scalp Protection

KH-804



Optional Accessories:



360° rotating magnetic

Specification:



600 million
Negative Ions
Output



110000 RPM
High Speed
Motor



Wind Speed
60m/sec



Customize Your
Color and Logo



3 different design



8 kinds of
drying mode

Product Data

Model No.:KH-804

Power: 1400W

Product Weight :384g
[without power cord]

Product Dimension:
88*70*293mm

Net Weight:
384g

Power cord :
1.7m(include plug)

Power Supply: 220-240V~, 50-60Hz(EU) 120V~, 60Hz(US)

Temperature Setting: Cold/ Warm / Hot

Wind Speed Setting: Low / High

Mode: Cold / Warm / Hot / Cold&Hot Circulation

KH-805



Optional Accessories:



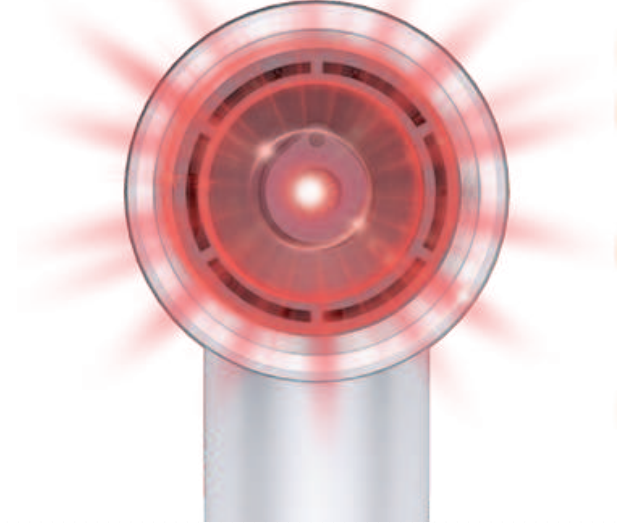
Smooth
Nozzle



360°rotating magnetic

Artificial Intelligence (AI) Hair Dryer Automatic Temperature Control Technology Help to protect scalp health

Quick&Intelligent drying without overheat damage



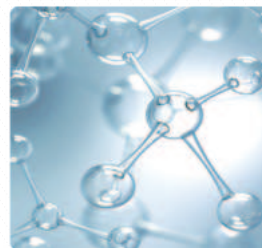
Scalp Protection Mode



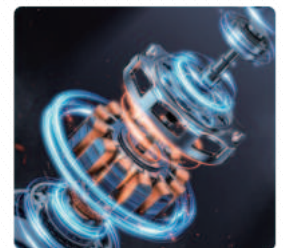
LED Lighting Indicator



600 million Negative ions



120000 RPM High Speed Motor



Specification:



600 million
Negative Ions
Output



110000 RPM
High Speed
Motor



Wind Speed
60m/sec



Customize Your
Color and Logo



3 different design



8 kinds of
drying mode

Product Data

Model No.:KH-805

Power:1400W

Product Weight :384g
[without power cord]

Product Dimension:
72*80*303mm

Net Weight:
407g

Power cord :
1.7m(include plug)

Power Supply: 220-240V~, 50-60Hz(EU) 120V~, 60Hz(US)

Temperature Setting: Cold/ Warm / Hot

Wind Speed Setting: Low / High

Mode: Cold / Warm / Hot / Cold&Hot Circulation /Scalp Protection

KH-806



Styling Nozzle

360 degree rotated Magnetic attachment, controls the wind direction to collect hair for long hair drying



Diffuser Nozzle

Suitable for long hair, drag the hair up and blow out the air to create a fluffy feel



Firm Smoothing Brush

2-in-1 Upgraded Nozzle: Smooth Hair Mode--The airflow penetrates deep into the hair and dries it while quickly smoothing out frizz. Anti-frizz Mode--The airflow draws in hair while smoothing out frizz, hiding flyaways and achieving a shiny finish

Specification:



600 million
Negative Ions
Output



110000 RPM
High Speed
Motor



Wind Speed
60m/sec



Customize Your
Color and Logo



3 different design



8 kinds of
drying mode

Product Data

Model No.:KH-806

Power: 1400W

Product Weight :384g
[without power cord]

Product Dimension:
133*71*267mm

Net Weight:
380g

Power cord :
1.7m(include plug)

Power Supply:2 20-240V~, 50-60Hz(EU) 120V~, 60Hz(US)

Wind Temperature: Cold/ Warm / Hot

Wind Speed : Low / High

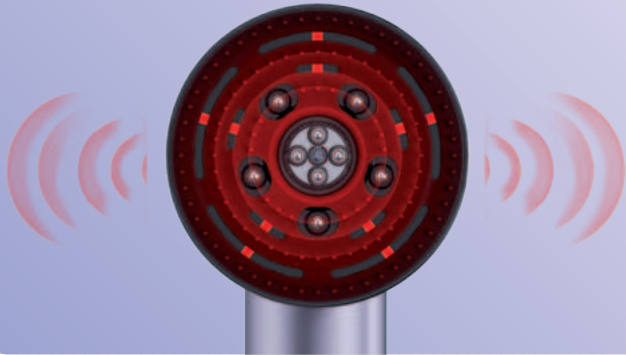
Mode: Cold Wind / Warm Wind / Hot Wind / Cold&Hot Wind Circulation

KH-860



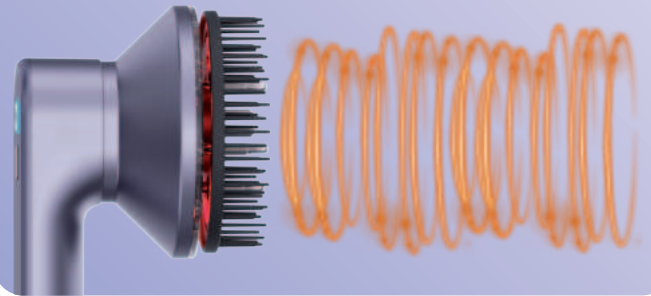
2500RPM

high-frequency vibration to clean the scalp



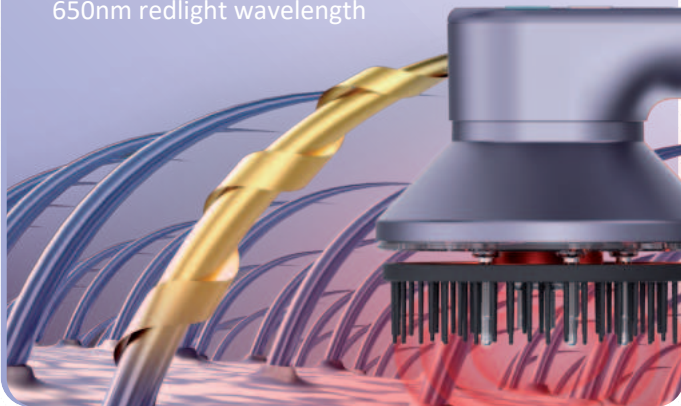
EMS Microcurrent

The microcurrent is even and stable, effectively driving the secondary movement of muscles, making the scalp feel more comfortable, while replenishing the vitality of the hair surface and strengthening the toughness of the hair roots.



650nm wavelength

650nm redlight wavelength



Essential oils nourish

hair follicles

Equipped with the black technology of thermal atomization



Circulation Fan



KH-529I



Specification:

- Dimension: 34 * 34 * 60 / 103 cm
- Power Supply: AC 100-240V
DC 12V 32W
- Fan Speed Setting: 26 levels
- Timer: 12 Hours
- Automatic oscillation:
Up / Down(90°, 105°) & Left / Right
(30°, 60°, 90°)
- Height adjustable: 60 / 103 cm
- Digit control and Remote Control
- Optional feature: Battery ,WiFi

KH-529J



Specification:

- Dimension: 34 * 34 * 45 / 103 cm
- Power Supply: AC 100-240V
DC 12V 32W
- Fan Speed Setting: 26 levels
- Timer : 12 hours
- Automatic oscillation:
Up / Down(90°, 105°) & Left / Right
(30°, 60°, 90°)
- Height adjustable: 45 / 103 cm
- Digit control and Remote Control
- Optional feature: Battery ,WiFi

KH-535



Specification:

- Dimension: 34 * 33 * 76 / 95 cm
- Power Supply: AC 100-240V
DC 12V 27W
- Fan speed setting: 26 levels
- Timer : 9 Hours
- Automatic oscillation:
Up / Down 105° & Left / Right 90°
- Height adjustable: 76 / 95 cm
- Digit control and Remote Control

KH-536G



Specification:

- Dimension: 34 * 33 * 51 / 88 cm
- Power Supply: AC 100-240V
DC 12V 27W
- Fan speed setting: 26 levels
- Timer : 12 hours
- Automatic oscillation: Up / Down 105°
& Left / Right 90°
- Height adjustable: 51/88 cm
- Digit control and Remote Control
- Optional feature: Battery

KH-537



Specification:

- Dimension: 34 * 33 * 49/86 cm
- Power Supply: AC 100-240V
DC 12V 27W
- Fan speed setting: 26 levels
- Timer : 9 Hours
- Automatic oscillation:
Up/Down 105° & Left/Right 90°
- Height adjustable: 49 / 86 cm
- Digit control and Remote Control
- Optional feature: Battery ,WiFi

KH-599G



Specification:

- Dimension: 22 * 20 * 44.5 cm
- Power Supply: AC 100-240V
DC 12V 29W
- Fan speed setting: 4 levels
- Timer : 12 Hours
- Automatic oscillation:
Right / Left 60°,90°,120°
- Reading Light Adjustment: High / Low
Bright
- Digit control and Remote Control

KH-531B



Specification:

- Dimension: 29.5 * 26.5 * 33.5 cm
- Power Supply: AC 100-240V
DC 24V 24W
- Fan speed setting: 26 levels
- Timer : 9 Hours
- Automatic oscillation:
Left / Right 90°
- Direction adjustable :
Up / Down manually
- Digit control and Remote Control

KH-533B



Specification:

- Dimension: 26.5 * 26 * 33 cm
- Power Supply: AC 100-240V
DC 12V 17W
- Fan speed setting: 3 levels
- Timer : 6 Hours
- Automatic oscillation:
Left / Right 90°&Up / Down 90°
- Digit control and Remote Control

Heaters



KH-909B



Specification:

- Dimension: 35.6 * 33 * 38.1 cm
- Power Supply: AC 120V 60Hz 1500W
AC 220V 50Hz 1500W
- Heating elements: Infrared PTC
- 3 Heat Settings: LOW 900W /
MID 1,100W / HIGH 1,500W
- HEPA Filter
- PCO Cell and UV lamp
- Built-in cut-off thermostat
- Digit control and Remote Control
- Coverage: Up to 93 m²

KH-909



Specification:

- Dimension: 24.5 * 29 * 38.5 cm
- Power Supply: AC 120V 60Hz 1500W
AC 220V 50Hz 1500W
- Heating Element :Infrared PTC
- Temperature: 16-32 °C
- PCO Cell and UV lamp
- Pre-filter
- Built-in cut-off thermostat
- Tip-over switch
- Digit control and Remote Control
- Coverage: Up to 93 m²

KH-932



Specification:

- Dimension: 40 * 29 * 64 cm
- Power Supply: AC 120V 60Hz 1500W
AC 220V 50Hz 1500W
- Heating elements: Copper PTC
- Temperature: 16-32°C
- Built-in cut-off thermostat
- Tilt-over switch
- DC Brushless motor
- HEPA Filter
- PCO Cell and UV lamp
- Digit control and Remote Control
- Coverage: Up to 93 m²

KH-927



Specification:

- Dimension: 21.5 * 20.5 * 34.6 cm
- Power Supply: AC 120V~60Hz 1500W
AC 220V~50Hz 1500W
- Heating elements: Infrared PTC
- Fan Speed Setting: 2 Levels
- Swing: 90 degrees horizontal adjustment
automatically
- Fan mode and Heating mode
- DC Brushless motor
- Built-in cut-off thermostat
- Tip-over switch
- Digit control and Remote Control
- Coverage: 10-25 m²

KH-950

Specification:

- Dimension: 25.4 * 25.4 * 27.6 cm
- Power Supply: AC 120V 60Hz 1500W
AC 220V 50Hz 2000W
- Heating Element: Golden Tube
- Timer: 12 Hours
- Mode: Hi / Mid / Low / Turbo / Quiet
- Temperature: 4-32 °C
- LED Digital Display
- Built-in cut-off thermostat
- Tip-over switch
- Remote Control Available
- WIFI function available
- Coverage: 93 m²



KH-951

Specification:

- Dimension: 25.4 * 25.4 * 27.6 cm
- Power Supply: AC 120V 60Hz 1500W
AC 220V 50Hz 2000W
- Heating Element: Golden Tube
- Timer: 12 Hours
- Mode: Hi / Mid / Low / Turbo / Quiet
- Temperature: 4-32 °C
- LED Digital Display
- Built-in cut-off thermostat
- Tip-over switch
- Remote Control Available
- WIFI Function Available
- Coverage: 93 m²



KH-952A

Specification:

- Dimension: 21.0 * 30.0 * 50.0 cm
- Power Supply: AC 120V 60Hz 1500W
AC 220V 50Hz 2000W
- Heating Element: Golden Tube
- Timer: 12 Hours
- Mode: Hi / Mid / Low / Turbo / Quiet
- Temperature: 4-32 °C
- LED Digital Display
- Built-in cut-off thermostat
- Tip-over switch
- Remote Control Available
- WIFI function available
- Coverage: 93 m²



KH-930A

Specification:

- Dimension: 59.2 * 21.2 * 63.8 cm
- Power Supply: AC 120V 60Hz 1500W
AC 220V 50Hz 1500W
- Heating Element : PTC & Carbon Fiber
- Timer : 12 Hours
- Mode: ECO / Quick / Child / Quiet
- Temperature: 4-32 °C
- LED Digital Display
- Built-in cut-off thermostat
- Tip-over switch
- Remote Control Available
- Coverage: 93 m²



KH-961



Specification:

- Dimension: 31.0 * 32.0 * 39.5 cm
- Power Supply: AC 120V 60Hz 1200W
AC 220V 50Hz 1500W
- Heating Element: Infrared PTC
- Swing: 90 degrees horizontal adjustment automatically
- Fan Speed: 10 Levels
- Noise Level: 18 dB lowest
- DC Brushless motor
- Built-in cut-off thermostat
- Tip-over switch
- Fan mode and Heater mode separately for all year using
- Remote Control Available
- Coverage: 10-25 m²

KH-962



Specification:

- Dimension: 27.2 * 25.5 * 38.4 cm
- Power Supply: AC 120V 60Hz 1200W
AC 220V 50Hz 1500W
- Heating Element :Infrared PTC
- Swing: 90°horizontal adjustment automatically
- Fan Speed: 10 Levels
- Noise Level: 18 dB lowest
- DC Brushless motor
- Built-in cut-off thermostat
- Tip-over switch
- Fan mode and Heater mode separately for all year using
- Remote Control Available
- Coverage: 10-25 m²

KH-927M



Specification:

- Dimension: 18.0 * 10.0 * 26.2 cm
- Power Supply: AC 120V 60Hz 1500W
AC 220V 50Hz 1500W
- Heating Element: Infrared PTC
- Mode: Ventilation / Low / High
- Built-in cut-off thermostat
- Overheat Protection
- Tip-over switch
- With Washable Pre-filter
- Coverage: 10-25 m²

KH-927R



Specification:

- Dimension: 21.0 * 30.0 * 50.0 cm
- Power Supply: AC 120V 60Hz 1500W
AC 220V 50Hz 1500W
- Heating Element: Infrared PTC
- Swing: 90° horizontal adjustment automatically
- Built-in cut-off thermostat
- Tip-over switch
- Remote Control Available
- Coverage: 10-25 m²

Air Purifier



KH-202A

Specification:

- Dimension : 35 * 20 * 55 cm
- Power Supply: AC 120V 60Hz 50/60W
AC 220V 50Hz 50/60W
- CADR: 360 m³/h
- Pre filter catch big particle
- Carbon filter remove odor effectively
- HEPA filter catch particles small as 0.3 micron
- Fan speed setting: 4 levels
- Dust and odor sensor included for automatic purifying depending on pollution level
- PLASMA ionization included kill bacteria and odor aggressively
- Positive ions: 3x10⁶/cm³
- Negative ions: 3x10⁶/cm³
- Coverage: 30-50m²



KH-201

Specification:

- Dimension: 35 * 20 * 55 cm
- Power Supply: AC 120V 60Hz 50/60W
AC 220V 50Hz 50/60W
- Fan speed setting: 4 levels
- CADR: 360 m³/h
- Pre filter catch big particle
- Carbon filter remove odor effectively
- HEPA filter catch particles small as 0.3 micron
- Dust and odor sensor included for automatic purifying depending on pollution level
- PLASMA ionization included kill bacteria and odor aggressively
- Positive ions: 3x10⁶/cm³
- Negative ions: 3x10⁶/cm³
- Coverage: 30-50m²



SFA1.0

Specification:

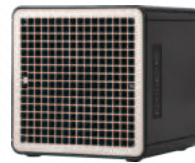
- Dimension: 31.5 * 22.9 * 28 cm
- Power Supply: DC 15V 21W
- Fan speed setting: 3 levels
- Ozone output: 150 mg/hr+ (Away Mode)
- Sanitizing Technology: Controlled Ozone,P-CO,Negative&Positive ions
- Filter: Washable prefilter
- Ion Concentration: 3x10⁶/cm³
- Coverage: up to 135m²



SFA1.1

Specification:

- Dimension: 31.5 * 22.9 * 28 cm
- Power Supply: DC 15V 21W
- Fan speed setting: 3 levels
- Ozone output : 150 mg/hr+ (Away Mode)
- Sanitizing Technology : Controlled Ozone,P-CO, Negative&Positive ions,
- Filter : Washable prefilter
- Ion Concentration : 3x10⁶/cm³
- Coverage : up to 135m²



SFA3.0

Specification:

- Dimension: 29.5 * 37.5 * 45 cm
- Power Supply: DC 38V 38W
- Fan speed setting: 5 levels
- Ozone output: 360 mg/hr+ (Away Mode)

Sanitizing

Technology : Controlled Ozone,
PCO Cell, Negative ions

- LCD display
- Adjustable 2, 4, 6, & 8-hour Away Mode
- Filter : Washable prefilter
- Ion generation: $2X10^6/cm^3$
- Coverage: Up to 279 m²



SFA3.0A

Specification:

- Dimension: 29.5 * 37.5 * 45 cm
- Power Supply: DC 38V 38W
- Fan speed setting: 5 levels
- Ozone output: 360 mg/hr+ (Away Mode)

Sanitizing

Technology : Controlled Ozone,
PCO Cell, Negative ions

- LCD display
- Adjustable 2, 4, 6, & 8-hour Away Mode
- Filter : Washable prefilter
- Ion generation: $2X10^6/cm^3$
- Coverage: Up to 279 m²



SFA3.0K

Specification:

- Dimension: 29.5 * 37.5 * 45 cm
- Power Supply: DC 38V 38W
- Ozone output: 360 mg/hr+ (Away Mode)

Sanitizing

Technology : Controlled Ozone,
PCO Cell, Negative ions

- LCD display
- Adjustable 0.5, 1, & 2-hour Away Mode
- Filter : Washable prefilter
- Ion generation: $2X10^6/cm^3$
- Coverage: Up to 279 m²



SFA3.0G

Specification:

- Dimension: 29.5 * 37.5 * 45 cm
- Power Supply: DC 38V 38W
- Fan speed setting: 5 levels
- Ozone output: 360 mg/hr+ (Away Mode)

Sanitizing

Technology : Controlled Ozone,
PCO Cell, Negative ions

- LCD display
- Adjustable 2, 4, 6, & 8-hour Away Mode
- Filter : Washable prefilter
- Ion generation: $2X10^6/cm^3$
- Coverage: Up to 279 m²



